

Characteristics of CLL in Senegal

Clinical features, cytology,
Immunophenotype, cytogenetic
abnormalities and altered
expression of microRNA

M. Raphaël, A. Sall Fall, T.
NDiaye Dieye, F. Samba, S.
Diop, C Mathiot, CH Gattoliat, E.
May, J. Wiels, A. Toure

Cheikh Anta Diop University,
Dakar, CNRS 8126, IGR, Institut
Curie, Paris-Sud University
Alliance Mondiale contre le
Cancer AMCC, Institut National
du Cancer, INCa, ALIAM



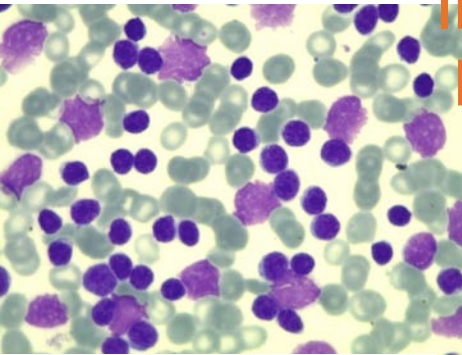
EP 5.1



Characteristics of CLL in Senegal

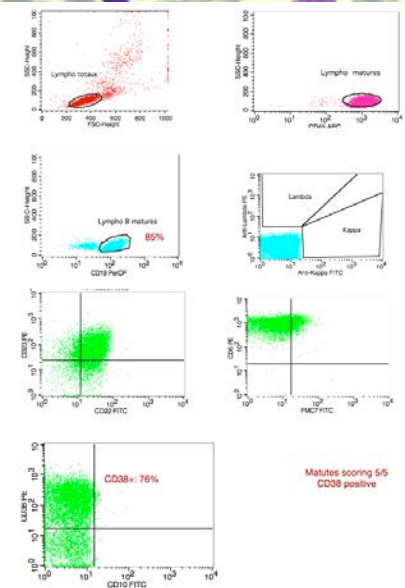
Clinical features, cytology, Immunophenotype

- 33 cases, mean age: 62 years, range [47-80]
- High Lymphocytosis: 9-840 G/L
- Clinical Binet Staging: 24 stage C, 4 stage B and 5 stage A



Immunophenotype Matutes scoring

- 30 pts : 4-5/5
- 3 patients: 3/5 atypical CLL



CD38:

- Positive : 26 pts
- Negative : 7 pts
- Worse pronostic factor

Characteristics of CLL in Senegal

Cytogenetic abnormalities and altered expression of microRNA

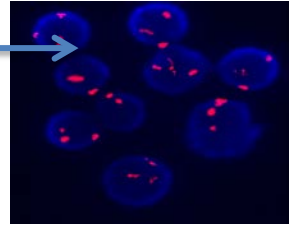
Cytogenetic, FISH: 25 pts

11 pts 44%, del of 13q

9 pts : trisomy 12

2 pts: del 11q (ATM)

2 pts: del 17p (TP53)



6 pts: 2 simultaneous lesions

Decreased expression of **5**

miRNAs (tumor suppressor) :

15a, 16-1, 181a, 181b, 34a,

analyzed by TaqMan miRNA qRT-PCR in 25 pts.

- **Aggressiveness of CLL in Senegal** : CD38+, del11q23, del

17p13), low expression of miRNA
Delay of the diagnosis or de novo aggressive CLL ?

- Such study is a model of capacity building for diagnosis and research in the country